

UNRAVELING ICD-10-PCS

PART 2

Examining the Structure and Methodology
for the Medical and Surgical *Related*
Sections of ICD-10-PCS





Understanding when and how to use these often overlooked or forgotten sections of ICD-10-PCS

LEARNING OBJECTIVES

1. Obstetrics
2. Placement
3. Administration
4. Measurement and Monitoring
5. Extracorporeal Assistance and Performance
6. Extracorporeal Therapies
7. Osteopathic
8. Other Procedures
9. Chiropractic



MEDICAL AND SURGICAL RELATED SECTIONS OF ICD-10-PCS

ICD-10-PCS Code FY 2019 Totals, By Section	
Medical and Surgical	68,639
Obstetrics	302
Placement	861
Administration	1,445
Measurement and Monitoring	414
Extracorporeal or Systemic Assistance and Performance	45
Extracorporeal or Systemic Therapies	46
Osteopathic	100
Other Procedures	60
Chiropractic	90
Imaging	2,941
Nuclear Medicine	463
Radiation Therapy	1,939
Physical Rehabilitation and Diagnostic Audiology	1,380
Mental Health	30
Substance Abuse Treatment	59
New Technology	67
Total	78,881



**MEDICAL AND SURGICAL RELATED
SECTIONS OF ICD-10-PCS**

- ▶ Codes from each of these sections contain seven characters
- ▶ The first three characters still report
 1. Section
 2. Body System
 3. Root Operation
- ▶ Characters 4 – 7 do not always represent the same information as they do in the Medical and Surgical Section



GENERAL ATTRIBUTES

OBSTETRICS SECTION



- ▶ 1st Character = Section
- ▶ 2nd Character = Body System
- ▶ 3rd Character = Root Operation
- ▶ 4th Character = Body Part
- ▶ 5th Character = Approach
- ▶ 6th Character = Device
- ▶ 7th Character = Qualifier



OBSTETRIC SECTION CHARACTER SPECIFICATION

- ▶ Includes only procedures performed on the products of conception
- ▶ Operations performed on the pregnant female are coded in the Medical and Surgical Section
- ▶ Two root operations unique to this section
 - ▶ Abortion
 - ▶ Delivery
- ▶ Other root operations are the same as those found in the Medical and Surgical Section



OBSTETRIC SECTION PRINCIPLES

SECTION CHARACTER

OBSTETRICS



- ▶ In the Obstetric Section the first character is always the number "1"



OBSTETRICS SECTION SECTION (1ST CHARACTER)

BODY SYSTEM CHARACTER

OBSTETRICS





- ▶ Contains a single body system:
 - ▶ Pregnancy

OBSTETRICS BODY SYSTEM (2ND CHARACTER)

ROOT OPERATION CHARACTER

OBSTETRICS





- ▶ Abortion: Artificially terminating a pregnancy
- ▶ Delivery: Assisting the passage of the products of conception from the genital canal

OBSTETRICS SECTION

ROOT OPERATION (3RD CHARACTER)

1. CHANGE
2. DRAINAGE
3. EXTRACTION
4. INSERTION
5. INSPECTION
6. REMOVAL
7. REPAIR
8. REPOSITION
9. RESECTION
10. TRANSPLANTATION



**OTHER POSSIBLE ROOT OPERATIONS
CURRENTLY AVAILABLE FOR OBSTETRICS**

BODY PART CHARACTER

OBSTETRICS



- ▶ Contains three different values for body part
 - ▶ Products of Conception
 - ▶ Products of Conception, Retained
 - ▶ Products of Conception, Ectopic



OBSTETRICS SECTION

BODY PART (4TH CHARACTER)

- ▶ Products of conception refers to all components of a pregnancy, including:
 - ▶ Fetus
 - ▶ Embryo
 - ▶ Amnion
 - ▶ Umbilical cord
 - ▶ Placenta
- ▶ There is no differentiation of the products of conception based on gestational age



OBSTETRICS SECTION

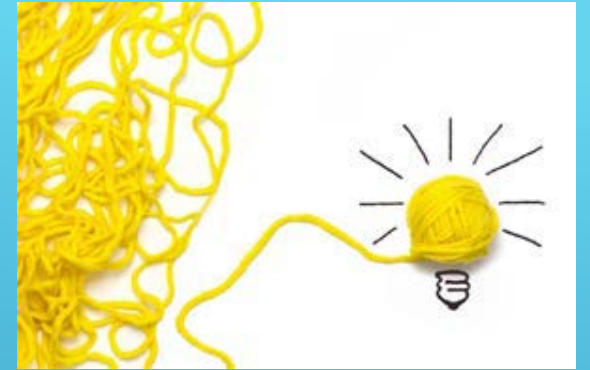
BODY PART (4TH CHARACTER)

APPROACH CHARACTER

OBSTETRICS



- ▶ Defines the technique used to reach the site of the procedure
- ▶ 6 different approach values apply to the Obstetrics Section



OBSTETRICS SECTION APPROACH (5TH CHARACTER)

1. Open
2. Percutaneous
3. Percutaneous Endoscopic
4. Via Natural or Artificial Opening
5. Via Natural or Artificial Opening Endoscopic
6. External



OBSTETRICS SECTION APPROACH (5TH CHARACTER)

DEVICE CHARACTER

OBSTETRICS



- ▶ The number of device values in the Obstetrics Section has actually been reduced to:
 - ▶ Monitoring Electrode
 - ▶ Other Device
 - ▶ No Device
- ▶ Previously this section contained other device values:
 - ▶ Laminaria
 - ▶ Abortifacient



OBSTETRICS SECTION DEVICE (6TH CHARACTER)

QUALIFIER CHARACTER

OBSTETRICS



- ▶ Values are dependent on the root operation, approach, or body part
- ▶ For example:
 - ▶ Method of Extraction (e.g. low forceps, vacuum)
 - ▶ Substance Drained (e.g. amniotic fluid, fetal blood)
 - ▶ Total of 34 device values in the Obstetrics Section



OBSTETRICS SECTION QUALIFIER (7TH CHARACTER)

- ▶ Classical
- ▶ Low Cervical
- ▶ Extraperitoneal
- ▶ Low Forceps
- ▶ Mid Forceps
- ▶ High Forceps
- ▶ Vacuum
- ▶ Internal Version
- ▶ Other
- ▶ Fetal Blood
- ▶ Fetal Cerebrospinal Fluid
- ▶ Fetal Fluid, Other
- ▶ Amniotic Fluid, Therapeutic
- ▶ Fluid, Other
- ▶ Nervous System
- ▶ Cardiovascular System
- ▶ Lymphatic & Hemic
- ▶ Eye
- ▶ Ear, Nose & Sinus
- ▶ Respiratory System
- ▶ Mouth & Throat
- ▶ Gastrointestinal System
- ▶ Hepatobiliary & Pancreas
- ▶ Endocrine System
- ▶ Skin
- ▶ Musculoskeletal System
- ▶ Urinary System
- ▶ Female Reproductive System
- ▶ Amniotic Fluid, Diagnostic
- ▶ Male Reproductive System
- ▶ Laminaria
- ▶ Abortifacient
- ▶ Other Body System
- ▶ No Qualifier



OBSTETRICS SECTION

EXAMPLES OF QUALIFIERS

<i>Section</i>	1 Obstetrics		
<i>Body System</i>	0 Pregnancy		
<i>Operation</i>	D Extraction: Pulling or stripping out or off all or a portion of a body part by the use of force		
<i>Body Part</i>	<i>Approach</i>	<i>Device</i>	<i>Qualifier</i>
0 Products of Conception	0 Open	Z No Device	0 Classical 1 Low Cervical 2 Extraperitoneal
0 Products of Conception	7 Via Natural or Artificial Opening	Z No Device	3 Low Forceps 4 Mid Forceps 5 High Forceps 6 Vacuum 7 Internal Version 8 Other
1 Products of Conception, Retained 2 Products of Conception, Ectopic	7 Via Natural or Artificial Opening 8 Via Natural or Artificial Opening Endoscopic	Z No Device	Z No Qualifier

OBSTETRICS SECTION TABLE 10D

PLACEMENT SECTION



- ▶ 1st Character = Section
- ▶ 2nd Character = Body System
- ▶ 3rd Character = Root Operation
- ▶ 4th Character = **Body Region/Orifice**
- ▶ 5th Character = Approach
- ▶ 6th Character = Device
- ▶ 7th Character = Qualifier



PLACEMENT SECTION CHARACTER SPECIFICATION

SECTION CHARACTER

PLACEMENT





- In the Placement Section the first character is always the number "2"

PLACEMENT SECTION SECTION (1ST CHARACTER)

BODY SYSTEM CHARACTER

PLACEMENT





- ▶ Contains only two body system values:
 - ▶ Anatomical Regions
 - ▶ Anatomical Orifices

PLACEMENT
BODY SYSTEM (2ND CHARACTER)

ROOT OPERATION CHARACTER

PLACEMENT



- ▶ Five root operations unique to this section
 - ▶ Compression
 - ▶ Dressing
 - ▶ Immobilization
 - ▶ Packing
 - ▶ Traction
- ▶ Two root operations common to other sections
 - ▶ Change
 - ▶ Removal



PLACEMENT SECTION ROOT OPERATION (3RD CHARACTER)

- ▶ **Compression:** Putting pressure on a body region
- ▶ **Dressing:** Putting material on a body region for protection
- ▶ **Immobilization:** Limiting or preventing motion of a body region
- ▶ **Packing:** Putting material in a body region or orifice
- ▶ **Traction:** Exerting a pulling force on a body region in a distal direction



PLACEMENT SECTION ROOT OPERATION (3RD CHARACTER)

BODY REGIONS/ORIFICES CHARACTER

PLACEMENT



- ▶ Two types of values:
 - ▶ External body regions (e.g. chest wall)
 - ▶ Natural orifices (e.g. mouth)



PLACEMENT SECTION
BODY REGION/ORIFICES (4TH CHARACTER)

APPROACH CHARACTER

PLACEMENT





- ▶ Only one possible approach in the Placement Section
 - ▶ External

PLACEMENT SECTION APPROACH (5TH CHARACTER)

DEVICE CHARACTER

PLACEMENT



- ▶ Specifies the material or device in the placement procedure (e.g. splint, bandage)
- ▶ Includes casts for fractures and dislocations
- ▶ Devices in the placement section are off the shelf and do not require any extensive design, fabrication or fitting
- ▶ The placement of devices that require extensive design, fabrication or fitting are code in the **Rehabilitation** section



PLACEMENT SECTION DEVICE (6TH CHARACTER)

QUALIFIER CHARACTER

PLACEMENT



- ▶ Only one selection:
 - ▶ No Device



PLACEMENT SECTION
QUALIFIER (7TH CHARACTER)

Section	2	Placement		
Body System	Y	Anatomical Orifices		
Operation	4	Packing: Putting material in a body region or orifice		
Body Region		Approach	Device	Qualifier
0 Mouth and Pharynx		X External	5 Packing Material	Z No Qualifier
1 Nasal				
2 Ear				
3 Anorectal				
4 Female Genital Tract				
5 Urethra				

PLACEMENT SECTION TABLE 2YA

ADMINISTRATION SECTION



- ▶ 1st Character = Section
- ▶ 2nd Character = **Physiological System**
- ▶ 3rd Character = Root Operation
- ▶ 4th Character = **Body System/Region**
- ▶ 5th Character = Approach
- ▶ 6th Character = **Substance**
- ▶ 7th Character = Qualifier



ADMINISTRATION SECTION CHARACTER SPECIFICATION

SECTION CHARACTER

ADMINISTRATION





- In the Placement Section the first character is always the number "3"

ADMINISTRATION SECTION SECTION (1ST CHARACTER)

BODY SYSTEM CHARACTER

ADMINISTRATION



- ▶ Contains three body system values:
 - ▶ Physiological Systems and Anatomical Regions
 - ▶ Circulatory
 - ▶ Indwelling Device



ADMINISTRATION BODY SYSTEM (2ND CHARACTER)

ROOT OPERATION CHARACTER

ADMINISTRATION



► For Physiological and Anatomical Regions

- **Introduction:** Putting in a therapeutic, diagnostic, nutritional, physiological or prophylactic substance except blood or blood products
- **Irrigation:** Putting in or on a cleansing substance



ADMINISTRATION SECTION
ROOT OPERATION (3RD CHARACTER)

► For Circulatory System:

► **Transfusion:** Putting in blood or blood products



ADMINISTRATION SECTION
ROOT OPERATION (3RD CHARACTER)

► For Indwelling Device:

► **Irrigation:** Putting in or on a cleansing substance

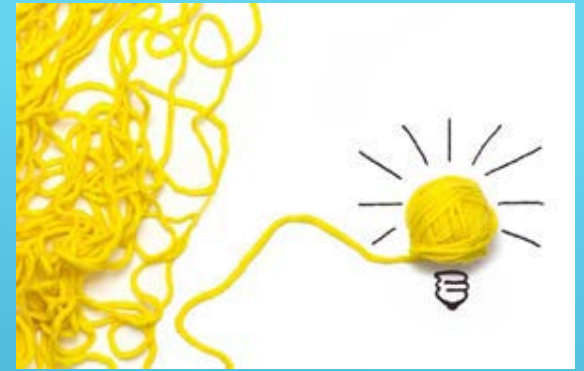


ADMINISTRATION SECTION
ROOT OPERATION (3RD CHARACTER)

BODY PART CHARACTER

ADMINISTRATION





- ▶ For **Introduction**, the body part specifies where the procedure occurs and not necessarily the site where the substance introduced has an effect
- ▶ For **Irrigation**, the body part specified the site of the irrigation

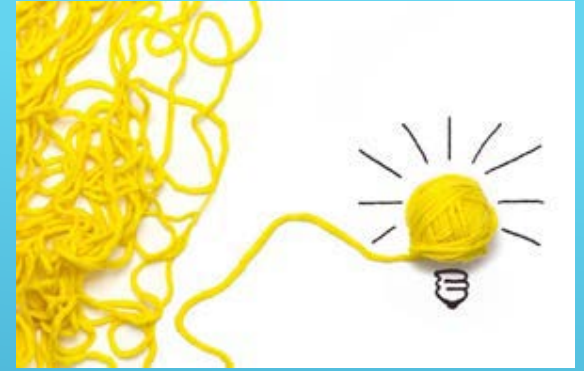
ADMINISTRATION SECTION BODY PART (4TH CHARACTER)

APPROACH CHARACTER

ADMINISTRATION



- ▶ Uses values defined in the Medical and Surgical section
- ▶ The approach value for intradermal, subcutaneous and intramuscular introductions (i.e. injections) is percutaneous
- ▶ If a catheter is used to introduce a substance into a site within the circulatory system, the approach value is also percutaneous



ADMINISTRATION SECTION APPROACH (5TH CHARACTER)

► Available selections:

- Open
- Percutaneous
- Via natural or artificial opening
- Via natural or artificial opening endoscopic
- External



ADMINISTRATION SECTION APPROACH (5TH CHARACTER)

SUBSTANCE CHARACTER

ADMINISTRATION



- ▶ Substances are specified in broad categories
- ▶ Substance values depend on body part



ADMINISTRATION SECTION SUBSTANCE (6TH CHARACTER)

- ▶ Physiological System & Anatomical Regions Examples:
 - ▶ Antineoplastic
 - ▶ Thrombolytic
 - ▶ Anti-infective
 - ▶ Anti-inflammatory
 - ▶ Nutritional Substance



**ADMINISTRATION SECTION
SUBSTANCE (6TH CHARACTER)**

▶ Circulatory System Examples:

- ▶ Serum Albumin
- ▶ Frozen Plasma
- ▶ Fresh Plasma
- ▶ Red Blood Cells
- ▶ Platelets



ADMINISTRATION SECTION
SUBSTANCE (6TH CHARACTER)

QUALIFIER CHARACTER

ADMINISTRATION



- ▶ May further specify a substance
 - ▶ Autologous
 - ▶ Nonautologous
 - ▶ High-dose Interleukin-2
 - ▶ Insulin
 - ▶ Other Hormone



ADMINISTRATION SECTION QUALIFIER (7TH CHARACTER)

<i>Section</i>	3	Administration	
<i>Body System</i>	0	Circulatory	
<i>Operation</i>	2	Transfusion: Putting in blood or blood products	
<i>Body System / Region</i>	<i>Approach</i>	<i>Substance</i>	<i>Qualifier</i>
3 Peripheral Vein 4 Central Vein	0 Open 3 Percutaneous	A Stem Cells, Embryonic	Z No Qualifier
3 Peripheral Vein 4 Central Vein	0 Open 3 Percutaneous	G Bone Marrow H Whole Blood J Serum Albumin K Frozen Plasma L Fresh Plasma M Plasma Cryoprecipitate N Red Blood Cells P Frozen Red Cells Q White Cells R Platelets S Globulin T Fibrinogen V Antihemophilic Factors W Factor IX X Stem Cells, Cord Blood Y Stem Cells, Hematopoietic	0 Autologous 1 Nonautologous

ADMINISTRATION SECTION TABLE 302

MEASUREMENT AND MONITORING SECTION



- ▶ 1st Character = Section
- ▶ 2nd Character = **Physiological System**
- ▶ 3rd Character = Root Operation
- ▶ 4th Character = **Body System**
- ▶ 5th Character = Approach
- ▶ 6th Character = **Function**
- ▶ 7th Character = Qualifier



MEASUREMENT & MONITORING SECTION CHARACTER SPECIFICATION

SECTION CHARACTER

MEASUREMENT & MONITORING





In the Measurement & Monitoring Section the first character is always the number "4"

MEASUREMENT & MONITORING SECTION SECTION (1ST CHARACTER)

BODY SYSTEM CHARACTER

MEASUREMENT & MONITORING





- ▶ Contains a single body system value:
 - ▶ Physiological Systems

MEASUREMENT & MONITORING BODY SYSTEM (2ND CHARACTER)

ROOT OPERATION CHARACTER

MEASURING & MONITORING



- ▶ **Measurement:** Determining the level of a physiological or physical function at a point in time
- ▶ **Monitoring:** Determining the level of a physiological or physical function repetitively over a period of time



MEASURING & MONITORING SECTION ROOT OPERATION (3RD CHARACTER)

BODY PART CHARACTER

MEASUREMENT & MONITORING



- ▶ Central Nervous
- ▶ Peripheral Nervous
- ▶ Cardiac
- ▶ Arterial
- ▶ Venous
- ▶ Circulatory
- ▶ Lymphatic
- ▶ Visual
- ▶ Olfactory
- ▶ Respiratory
- ▶ Gastrointestinal
- ▶ Biliary
- ▶ Urinary
- ▶ Musculoskeletal
- ▶ Skin and Breast
- ▶ Products of Conception, Cardiac
- ▶ Products of Conception. Nervous
- ▶ None



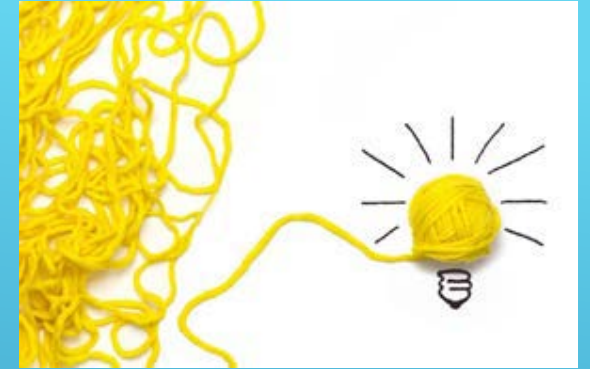
MEASUREMENT & MONITORING SECTION BODY PART (4TH CHARACTER)

APPROACH CHARACTER

MEASUREMENT & MONITORING



- ▶ Open
- ▶ Percutaneous
- ▶ Percutaneous Endoscopic
- ▶ Via natural or Artificial Opening
- ▶ Via natural or Artificial Opening Endoscopic
- ▶ External



MEASUREMENT & MONITORING SECTION APPROACH (5TH CHARACTER)

FUNCTION CHARACTER

MEASUREMENET & MONITORING



Specifies physiological or physical functions



MEASUREMENT & MONITORING SECTION
FUNCTION (6TH CHARACTER)

- ▶ Acuity
- ▶ Capacity
- ▶ Conductivity
- ▶ Electrical Activity
- ▶ Flow
- ▶ Metabolism
- ▶ Mobility
- ▶ Motility
- ▶ Output
- ▶ Pressure
- ▶ Sleep
- ▶ Saturation
- ▶ Rate
- ▶ Resistance
- ▶ Rhythm
- ▶ Secretion
- ▶ Sound
- ▶ Pulse
- ▶ Temperature
- ▶ Volume
- ▶ Total Activity
- ▶ Sampling & Pressure
- ▶ Action Currents
- ▶ Vascular Perfusion



MEASUREMENT & MONITORING SECTION FUNCTION (6TH CHARACTER)

QUALIFIER CHARACTER

MEASUREMENT & MONITORING



- ▶ Central
- ▶ Peripheral
- ▶ Portal
- ▶ Pulmonary
- ▶ Stress
- ▶ Ambulatory
- ▶ Right Heart
- ▶ Left Heart
- ▶ Bilateral
- ▶ Sensory
- ▶ Guidance
- ▶ Motor
- ▶ Coronary
- ▶ Intracranial
- ▶ Other Thoracic
- ▶ Intraoperative
- ▶ Indocyanine Dye
- ▶ No Qualifier



MEASUREMENT & MONITORING SECTION QUALIFIER (7TH CHARACTER)

<i>Section</i>	4 Measurement and Monitoring		
<i>Body System</i>	A Physiological Systems		
<i>Operation</i>	1 Monitoring: Determining the level of a physiological or physical function repetitively over a period of time		
<i>Body System</i>	<i>Approach</i>	<i>Function / Device</i>	<i>Qualifier</i>
0 Central Nervous	0 Open	2 Conductivity B Pressure	Z No Qualifier
0 Central Nervous	0 Open	4 Electrical Activity	G Intraoperative Z No Qualifier
0 Central Nervous	3 Percutaneous	4 Electrical Activity	G Intraoperative Z No Qualifier
0 Central Nervous	3 Percutaneous	B Pressure K Temperature R Saturation	D Intracranial
0 Central Nervous	7 Via Natural or Artificial Opening	B Pressure K Temperature R Saturation	D Intracranial
0 Central Nervous	X External	2 Conductivity	Z No Qualifier
0 Central Nervous	X External	4 Electrical Activity	G Intraoperative Z No Qualifier

MEASUREMENT & MONITORING TABLE 4A1

EXTRACORPOREAL ASSISTANCE AND PERFORMANCE SECTION



- ▶ 1st Character = Section
- ▶ 2nd Character = **Physiological System**
- ▶ 3rd Character = Root Operation
- ▶ 4th Character = **Body System**
- ▶ 5th Character = **Duration**
- ▶ 6th Character = **Function**
- ▶ 7th Character = Qualifier



EXTRACORPOREAL ASSISTANCE AND PERFORMANCE SECTION CHARACTER SPECIFICATION

SECTION CHARACTER

EXTRACORPOREAL ASSISTANCE
AND PERFORMANCE





In the Extracorporeal Assistance and Performance Section the first character is always the number "5"

EXTRACORPOREAL ASSISTANCE AND PERFORMANCE SECTION SECTION (1ST CHARACTER)

BODY SYSTEM CHARACTER

EXTRACORPOREAL ASSISTANCE
AND PERFORMANCE





- ▶ Contains a single body system value:
 - ▶ Physiological Systems

EXTRACORPOREAL ASSISTANCE &
PERFORMANCE SECTION
BODY SYSTEM (2ND CHARACTER)

ROOT OPERATION CHARACTER

EXTRACORPOREAL ASSISTANCE
AND PERFORMANCE SECTION



- ▶ **ASSISTANCE:** Taking over a portion of a physiological function by extracorporeal means
- ▶ **PERFORMANCE:** Completely taking over a physiological function by extracorporeal means
- ▶ **RESTORATION:** Returning, or attempting to return, a physiological function to its normal state by extracorporeal means



EXTRACORPOREAL ASSISTANCE & PERFORMANCE SECTION ROOT OPERATION (3RD CHARACTER)

BODY SYSTEM CHARACTER

EXTRACORPOREAL ASSISTANCE
& PERFORMANCE



- ▶ Cardiac
- ▶ Circulatory
- ▶ Respiratory
- ▶ Biliary
- ▶ Urinary



EXTRACORPOREAL ASSISTANCE & PERFORMANCE SECTION BODY SYSTEM (4TH CHARACTER)

DURATION CHARACTER

EXTRACORPOREAL ASSISTANCE &
PERFORMANCE



- ▶ Specifies whether the procedure was a single occurrence, multiple occurrence, intermittent, or continuous
- ▶ For respiratory ventilation assistance or performance, the range of hours is specified
 - ▶ < 24 hours
 - ▶ 24 – 96 hours
 - ▶ > 96 hours



EXTRACORPOREAL ASSISTANCE & PERFORMANCE SECTION DURATION (5TH CHARACTER)

FUNCTION CHARACTER

EXTRACORPOREAL ASSISTANCE &
PERFORMANCE



- ▶ Specifies the physiological function assisted or performed
 - ▶ Filtration
 - ▶ Output
 - ▶ Oxygenation
 - ▶ Pacing
 - ▶ Rhythm
 - ▶ Ventilation



**MEASUREMENT & MONITORING SECTION
FUNCTION (6TH CHARACTER)**

QUALIFIER CHARACTER

EXTRACORPOREAL ASSISTANCE
& PERFORMANCE



- ▶ Balloon Pump
- ▶ Hyperbaric
- ▶ Manual
- ▶ Membrane
- ▶ Nonmechanical
- ▶ Pulsatile Compression
- ▶ Other Pump
- ▶ Continuous Positive Airway Pressure
- ▶ Intermittent Positive Airway Pressure
- ▶ Continuous Negative Airway Pressure
- ▶ Intermittent Negative Airway Pressure
- ▶ Supersaturated
- ▶ Impeller Pump
- ▶ No Qualifier



EXTRACORPOREAL ASSISTANCE & PERFORMANCE SECTION QUALIFIER (7TH CHARACTER)

<i>Section</i>	5 Extracorporeal Assistance and Performance		
<i>Body System</i>	A Physiological Systems		
<i>Operation</i>	2 Restoration: Returning, or attempting to return, a physiological function to its original state by extracorporeal means.		
<i>Body System</i>		<i>Duration</i>	<i>Function</i>
2 Cardiac		0 Single	4 Rhythm
			Z No Qualifier

EXTRACORPOREAL ASSISTANCE & PERFORMANCE SECTION TABLE 5A2

EXTRACORPOREAL THERAPIES SECTION



- ▶ 1st Character = Section
- ▶ 2nd Character = **Physiological System**
- ▶ 3rd Character = Root Operation
- ▶ 4th Character = **Body System**
- ▶ 5th Character = **Duration**
- ▶ 6th Character = **Qualifier**
- ▶ 7th Character = Qualifier



EXTRACORPOREAL THERAPIES SECTION CHARACTER SPECIFICATION

SECTION CHARACTER

EXTRACORPOREAL THERAPIES





In the Extracorporeal Therapies Section the first character is always the number "6"

EXTRACORPOREAL THERAPIES SECTION SECTION (1ST CHARACTER)

BODY SYSTEM CHARACTER

EXTRACORPOREAL THERAPIES





- ▶ Contains a single body system value:
 - ▶ Physiological Systems

EXTRACORPOREAL THERAPIES
BODY SYSTEM (2ND CHARACTER)

ROOT OPERATION CHARACTER

EXTRACORPOREAL THERAPIES



- ▶ Atmospheric Control
- ▶ Decompression
- ▶ Electromagnetic Therapy
- ▶ Hyperthermia
- ▶ Hypothermia
- ▶ Pheresis
- ▶ Phototherapy
- ▶ Ultrasound Therapy
- ▶ Ultraviolet Light Therapy
- ▶ Shock Wave Therapy
- ▶ Perfusion



EXTRACORPOREAL THERAPIES SECTION ROOT OPERATION (3RD CHARACTER)

BODY SYSTEM CHARACTER

EXTRACORPOREAL THERAPIES



- ▶ Skin
- ▶ Urinary
- ▶ Central Nervous
- ▶ Musculoskeletal
- ▶ Circulatory
- ▶ Respiratory System
- ▶ Hepatobiliary System and Pancreas
- ▶ Urinary System
- ▶ None

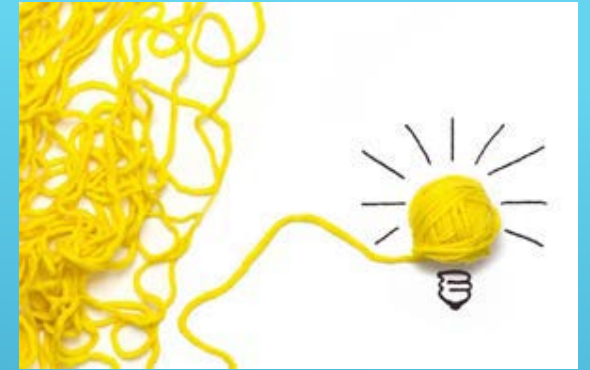


EXTRACORPOREAL THERAPIES SECTION BODY SYSTEM (4TH CHARACTER)

DURATION CHARACTER

EXTRACORPOREAL THERAPIES





- Specifies whether the procedure was a single occurrence or multiple occurrence

EXTRACORPOREAL THERAPIES DURATION (5TH CHARACTER)

QUALIFIER CHARACTER

EXTRACORPOREAL THERAPIES



- ▶ The 6th character for the Extracorporeal Therapies Section is the first of two
- ▶ Only signifies one of two things:
 - ▶ Donor Organ
 - ▶ No Qualifier



EXTRACORPOREAL THERAPIES SECTION QUALIFIER (6TH CHARACTER)

QUALIFIER CHARACTER

EXTRACORPOREAL THERAPIES



- ▶ Erythrocytes
- ▶ Leukocytes
- ▶ Platelets
- ▶ Plasma
- ▶ Head and Neck Vessels
- ▶ Heart
- ▶ Peripheral Vessels
- ▶ Other Vessels
- ▶ Stem Cells, Cord Blood
- ▶ Stem Cells, Hematopoietic
- ▶ No Qualifier



EXTRACORPOREAL THERAPIES SECTION QUALIFIER (7TH CHARACTER)

Section 6 Extracorporeal or Systemic Therapies

Body System A Physiological Systems

Operation 0 Atmospheric Control: Extracorporeal control of atmospheric pressure and composition

Body System	Duration	Qualifier	Qualifier
Z None	0 Single 1 Multiple	Z No Qualifier	Z No Qualifier

EXTRACORPOREAL ASSISTANCE &
PERFORMANCE SECTION TABLE 6A0

OSTEOPATHIC SECTION



- ▶ 1st Character = Section
- ▶ 2nd Character = **Anatomic Regions**
- ▶ 3rd Character = Root Operation
- ▶ 4th Character = **Body Region**
- ▶ 5th Character = Approach
- ▶ 6th Character = **Method**
- ▶ 7th Character = Qualifier



OSTEOPATHIC SECTION CHARACTER SPECIFICATION

SECTION CHARACTER

OSTEOPATHIC





In the Osteopathic Section the first character is always the number "7"

OSTEOPATHIC SECTION SECTION (1ST CHARACTER)

BODY SYSTEM CHARACTER

OSTEOPATHIC SECTION





- ▶ Contains a single body system value:
 - ▶ Anatomical Regions

OSTEOPATHIC BODY SYSTEM (2ND CHARACTER)

ROOT OPERATION CHARACTER

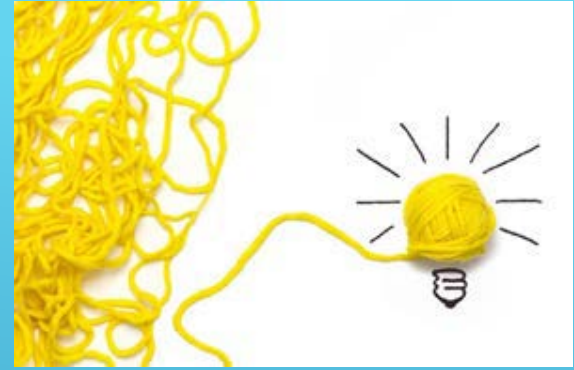
OSTEOPATHIC SECTION



- ▶ Contains a single root operation value

- ▶ Treatment

- ▶ Manual treatment to eliminate or alleviate somatic dysfunction and related disorders



OSTEOPATHIC SECTION ROOT OPERATION (3RD CHARACTER)

BODY REGION CHARACTER

OSTEOPATHIC SECTION



- ▶ Head
- ▶ Cervical
- ▶ Thoracic
- ▶ Lumbar
- ▶ Sacrum
- ▶ Pelvis
- ▶ Lower Extremities
- ▶ Upper Extremities
- ▶ Rib Cage
- ▶ Abdomen



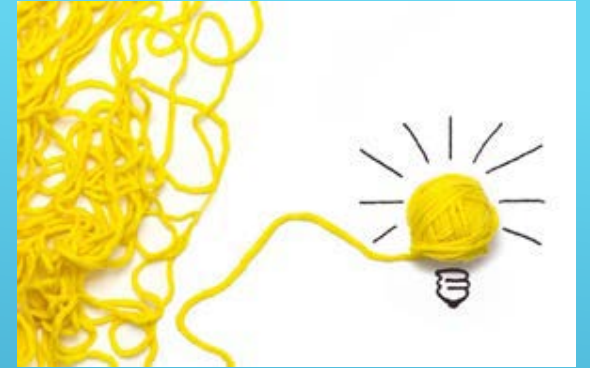
OSTEOPATHIC SECTION BODY REGION (4TH CHARACTER)

APPROACH CHARACTER

OSTEROPATHIC SECTION



- ▶ Currently only one selection
 - ▶ External



OSTEOPATHIC SECTION APPROACH (5TH CHARACTER)

METHOD CHARACTER

ORTHOPATHIC SECTION



- ▶ Articulatory-Raising
- ▶ Fascial Release
- ▶ General Mobilization
- ▶ High Velocity-Low Amplitude
- ▶ Indirect
- ▶ Low-Velocity-High-Amplitude
- ▶ Lymphatic Pump
- ▶ Muscle Energy-Isometric
- ▶ Muscle Energy-Isotonic
- ▶ Other Method



OSTEOPATHIC SECTION METHOD (6TH CHARACTER)

QUALIFIER CHARACTER

OSTEOPATHIC SECTION



- ▶ Only one!
- ▶ None!



OSTEOPATHIC SECTION QUALIFIER (7TH CHARACTER)

Section 7 Osteopathic Body System W Anatomical Regions Operation 0 Treatment: Manual treatment to eliminate or alleviate somatic dysfunction and related disorders			
Body Region	Approach	Method	Qualifier
0 Head 1 Cervical 2 Thoracic 3 Lumbar 4 Sacrum 5 Pelvis 6 Lower Extremities 7 Upper Extremities 8 Rib Cage 9 Abdomen	X External	0 Articulatary-Raising 1 Fascial Release 2 General Mobilization 3 High Velocity-Low Amplitude 4 Indirect 5 Low Velocity-High Amplitude 6 Lymphatic Pump 7 Muscle Energy-Isometric 8 Muscle Energy-Isotonic 9 Other Method	Z None

OSTEOPATHIC SECTION TABLE 7W0

OTHER PROCEDURES SECTION



- ▶ 1st Character = Section
- ▶ 2nd Character = Indwelling Devices and Physiological Systems/Anatomic Regions
- ▶ 3rd Character = Root Operation
- ▶ 4th Character = Body Region
- ▶ 5th Character = Approach
- ▶ 6th Character = Method
- ▶ 7th Character = Qualifier



OTHER PROCEDURES SECTION CHARACTER SPECIFICATION

SECTION CHARACTER

OTHER PROCEDURES





In the Osteopathic Section the first character is always the number "8"

OSTEOPATHIC SECTION SECTION (1ST CHARACTER)

BODY SYSTEM CHARACTER

OTHER PROCEDURES SECTION





- ▶ Indwelling Devices
- ▶ Physiological Systems and Anatomical Regions

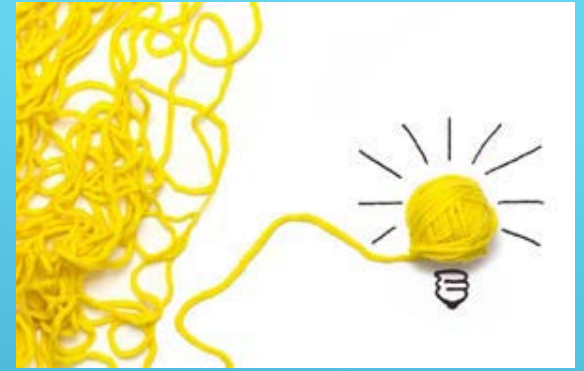
OTHER PROCEDURES SECTION
BODY SYSTEM (2ND CHARACTER)

ROOT OPERATION CHARACTER

OTHER PROCEDURES SECTION



- ▶ Contains a single root operation value
 - ▶ Other Procedure
 - ▶ Methodologies which attempt to remediate or cure a disorder or disease



OTHER PROCEDURES SECTION
ROOT OPERATION (3RD CHARACTER)

BODY REGION CHARACTER

OTHER PROCEDURES SECTION



- ▶ For Indwelling Devices
 - ▶ Nervous System
 - ▶ Circulatory System



OTHER PROCEDURES SECTION
BODY REGION (4TH CHARACTER)

► For Physiological Systems and Anatomical Regions

- Nervous System
- Circulatory System
- Head and Neck
- Integumentary system and Breast
- Musculoskeletal System
- Female Reproductive system
- Male Reproductive System
- Trunk Region
- Upper Extremity
- Lower Extremity
- None



**OTHER PROCEDURES SECTION
BODY REGION (4TH CHARACTER)**

APPROACH CHARACTER

OTHER PROCEDURES SECTION





- ▶ For Indwelling Device
 - ▶ External

OTHER PROCEDURES SECTION
APPROACH (5TH CHARACTER)

- ▶ For Physiological Systems and Anatomical Regions
 - ▶ Open
 - ▶ Percutaneous
 - ▶ Percutaneous Endoscopic
 - ▶ Via Natural or Artificial Opening
 - ▶ Via Natural or Artificial Opening Endoscopic
 - ▶ External



**OTHER PROCEDURES SECTION
APPROACH (5TH CHARACTER)**

METHOD CHARACTER

OTHER PROCEDURES SECTION



- ▶ For Indwelling Devices
 - ▶ Collection



OTHER PROCEDURES SECTION
METHOD (6TH CHARACTER)

- ▶ For Physiological Systems and Anatomical Regions
 - ▶ Acupuncture
 - ▶ Therapeutic Massage
 - ▶ Collection
 - ▶ Computer Assisted Procedure
 - ▶ Robot Assisted Procedure
 - ▶ Near Infrared Spectroscopy
 - ▶ Other Method



OTHER PROCEDURES SECTION METHOD (6TH CHARACTER)

QUALIFIER CHARACTER

OTHER PROCEDURES SECTION



- ▶ For Indwelling Devices

- ▶ Cerebrospinal Fluid
- ▶ Blood
- ▶ Other Fluid



OTHER PROCEDURE SECTION
QUALIFIER (7TH CHARACTER)

► For Physiological Systems and Anatomical Regions

- Anesthesia
- In Vitro Fertilization
- Breast Milk
- Sperm
- Yoga Therapy
- Meditation
- Isolation
- Examination



OTHER PROCEDURE SECTION
QUALIFIER (7TH CHARACTER)

► For Physiological Systems and Anatomical Regions

- Suture Removal
- Piercing
- Prostate
- Rectum
- With Fluoroscopy
- With Computerized Tomography
- With Magnetic Resonance Imaging
- No Qualifier



**OTHER PROCEDURE SECTION
QUALIFIER (7TH CHARACTER)**

Section 8 Other Procedures			
Body System C Indwelling Device			
Operation 0 Other Procedures: Methodologies which attempt to remediate or cure a disorder or disease			
Body Region	Approach	Method	Qualifier
1 Nervous System	X External	6 Collection	J Cerebrospinal Fluid L Other Fluid
2 Circulatory System	X External	6 Collection	K Blood L Other Fluid

OTHER PROCEDURES SECTION TABLE 8C0

CHIROPRACTIC SECTION



- ▶ 1st Character = Section
- ▶ 2nd Character = **Anatomic Regions**
- ▶ 3rd Character = Root Operation
- ▶ 4th Character = **Body Region**
- ▶ 5th Character = Approach
- ▶ 6th Character = **Method**
- ▶ 7th Character = Qualifier



CHIROPRACTIC SECTION CHARACTER SPECIFICATION

SECTION CHARACTER

CHIROPRACTIC SECTION





In the Osteopathic Section the first character is always the number "9"

CHIROPRACTIC SECTION
SECTION (1ST CHARACTER)

BODY SYSTEM CHARACTER

CHIROPRACTIC SECTION





- ▶ Contains a single body system value
 - ▶ Anatomical Regions

CHIROPRACTIC SECTION BODY SYSTEM (2ND CHARACTER)

ROOT OPERATION CHARACTER

CHIROPRACTIC SECTION



- ▶ Contains a single root operation value
 - ▶ Manipulation
 - ▶ Manual procedure that involves a directed thrust to move a joint past the physiological range of motion, without exceeding the anatomical limit



OTHER PROCEDURES SECTION
ROOT OPERATION (3RD CHARACTER)

BODY REGION CHARACTER

CHIROPRACTIC SECTION



- ▶ Head
- ▶ Cervical
- ▶ Thoracic
- ▶ Lumbar
- ▶ Sacrum
- ▶ Pelvis
- ▶ Lower Extremities
- ▶ Upper Extremities
- ▶ Rib Cage
- ▶ Abdomen



CHIROPRACTIC SECTION BODY REGION (4TH CHARACTER)

APPROACH CHARACTER

CHIROPRACTIC SECTION



- ▶ Only one value!
 - ▶ External



CHIROPRACTIC SECTION APPROACH (5TH CHARACTER)

METHOD CHARACTER

CHIROPRACTIC SECTION



- ▶ Non-manual
- ▶ Indirect Visceral
- ▶ Extra-Articular
- ▶ Direct Visceral
- ▶ Long Lever Specific Contact
- ▶ Short Lever Specific Contact
- ▶ Long and Short Lever Specific Contact
- ▶ Mechanically Assisted
- ▶ Other Method



CHIROPRACTIC SECTION METHOD (6TH CHARACTER)

QUALIFIER CHARACTER

CHIROPRACTIC SECTION



- ▶ Only one value:
 - ▶ None



CHIROPRACTIC SECTION QUALIFIER (7TH CHARACTER)

Section 9 Chiropractic

Body System W Anatomical Regions

Operation B Manipulation: Manual procedure that involves a directed thrust to move a joint past the physiological range of motion, without exceeding the anatomical limit

Body Region	Approach	Method	Qualifier
0 Head 1 Cervical 2 Thoracic 3 Lumbar 4 Sacrum 5 Pelvis 6 Lower Extremities 7 Upper Extremities 8 Rib Cage 9 Abdomen	X External	B Non-Manual C Indirect Visceral D Extra-Articular F Direct Visceral G Long Lever Specific Contact H Short Lever Specific Contact J Long and Short Lever Specific Contact K Mechanically Assisted L Other Method	Z None

CHIROPRACTIC SECTION TABLE 9

- ▶ *ICD-10-PCS Reference Manual*

- ▶ Rhonda Butler, CCS, CCS-P
- ▶ Robert L. Mullin, M.D.
- ▶ Thelma M. Grant, MBA, RHIA
- ▶ Richard Averill, M.S.
- ▶ Barbara Steinbeck, RHIT

- ▶ *ICD-10 Procedure Coding System (ICD-10-PCS)*

- ▶ RLM.MD – ICD-10-PCS
- ▶ *2017 ICD-10-PCS – The Complete Official Code Set*



REFERENCES



Thank you!!!